



AGENZIA DEL DEMANIO
DIREZIONE REGIONALE CALABRIA
SERVIZI TECNICI

RIFUNZIONALIZZAZIONE IMMOBILE DEMANIALE
“EX CASERMA DUCA D’AOSTA” PER NUOVO POLO MEF
SITO IN REGGIO CALABRIA (RC)
SCHEMA RCD0026

PROGETTO DI FATTIBILITÀ TECNICA ECONOMICA

Corpo B – Schema tabellare infissi – Maglie
strutturali alle varie quote - Impianti

IL RESPONSABILE UNICO DEL PROCEDIMENTO



ING. SALVATORE CONCETTINO

IL TECNICO ISTRUTTORE



ING. ALESSANDRA LEGATO

CODICE ELABORATO
TAV. 21

SCALA
1:100

PROTOCOLLO E DATA
2019/4893 /DRCAL/STE del 14/08/2019

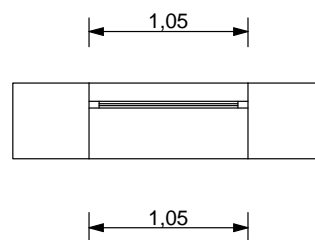
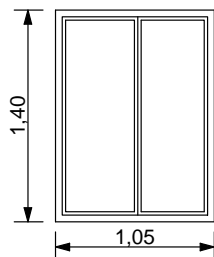
TIPOLOGIA: Finestra

Materiale: Ferro

Dimensioni minime: 105 cm * 140 cm

Dimensioni massime: 105 cm * 140cm

Piano Terra N°: 1



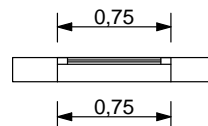
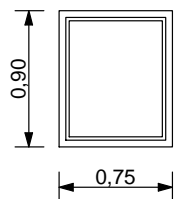
TIPOLOGIA: Finestra

Materiale: Ferro

Dimensioni minime: 75 cm * 90 cm

Dimensioni massime: 75 cm * 90 cm

Piano Terra N°: 1



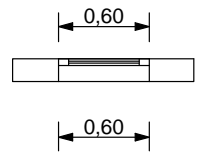
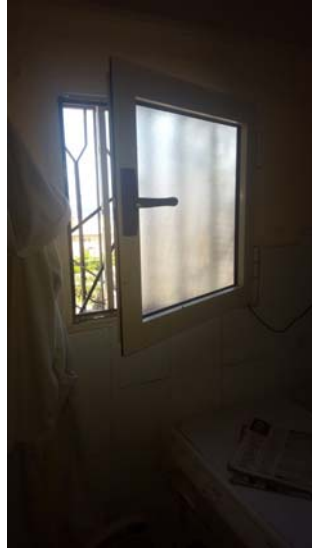
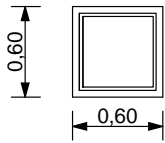
TIPOLOGIA: Finestra

Materiale: Alluminio

Dimensioni minime: 60 cm * 60 cm

Dimensioni massime: 60 cm * 60cm

Piano Terra N°: 1



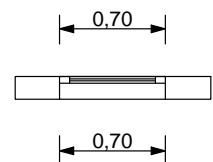
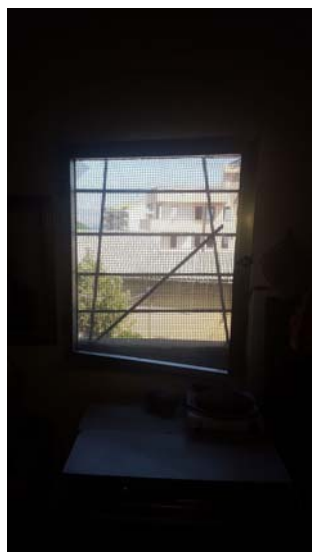
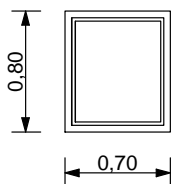
TIPOLOGIA: Finestra

Materiale: Alluminio

Dimensioni minime: 70 cm * 80 cm

Dimensioni massime: 70 cm * 80 cm

Piano Terra N°: 1



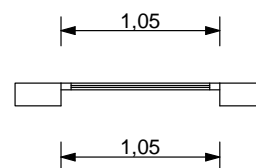
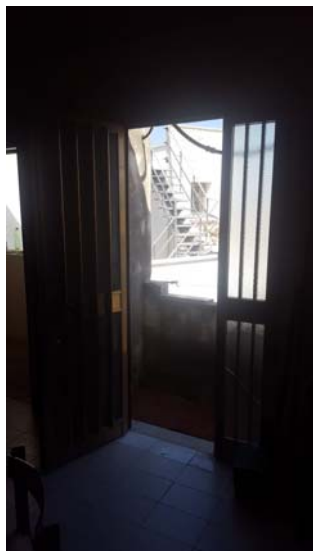
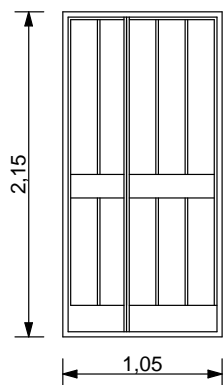
TIPOLOGIA: Portone

Materiale: Alluminio

Dimensioni minime: 105 cm * 215cm

Dimensioni massime: 105 cm * 215cm

Piano Terra N°: 1



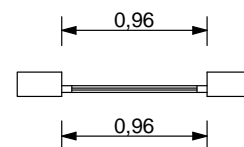
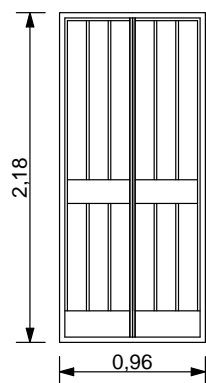
TIPOLOGIA: Finestra

Materiale: Ferro

Dimensioni minime: 96 cm * 218 cm

Dimensioni massime: 96 cm * 218 cm

Piano Terra N°: 1



TIPOLOGIA: Finestra

Materiale: Ferro

Dimensioni minime: 130 cm * 205 cm

Dimensioni massime: 130 cm * 205 cm

Piano Terra N°: 1

