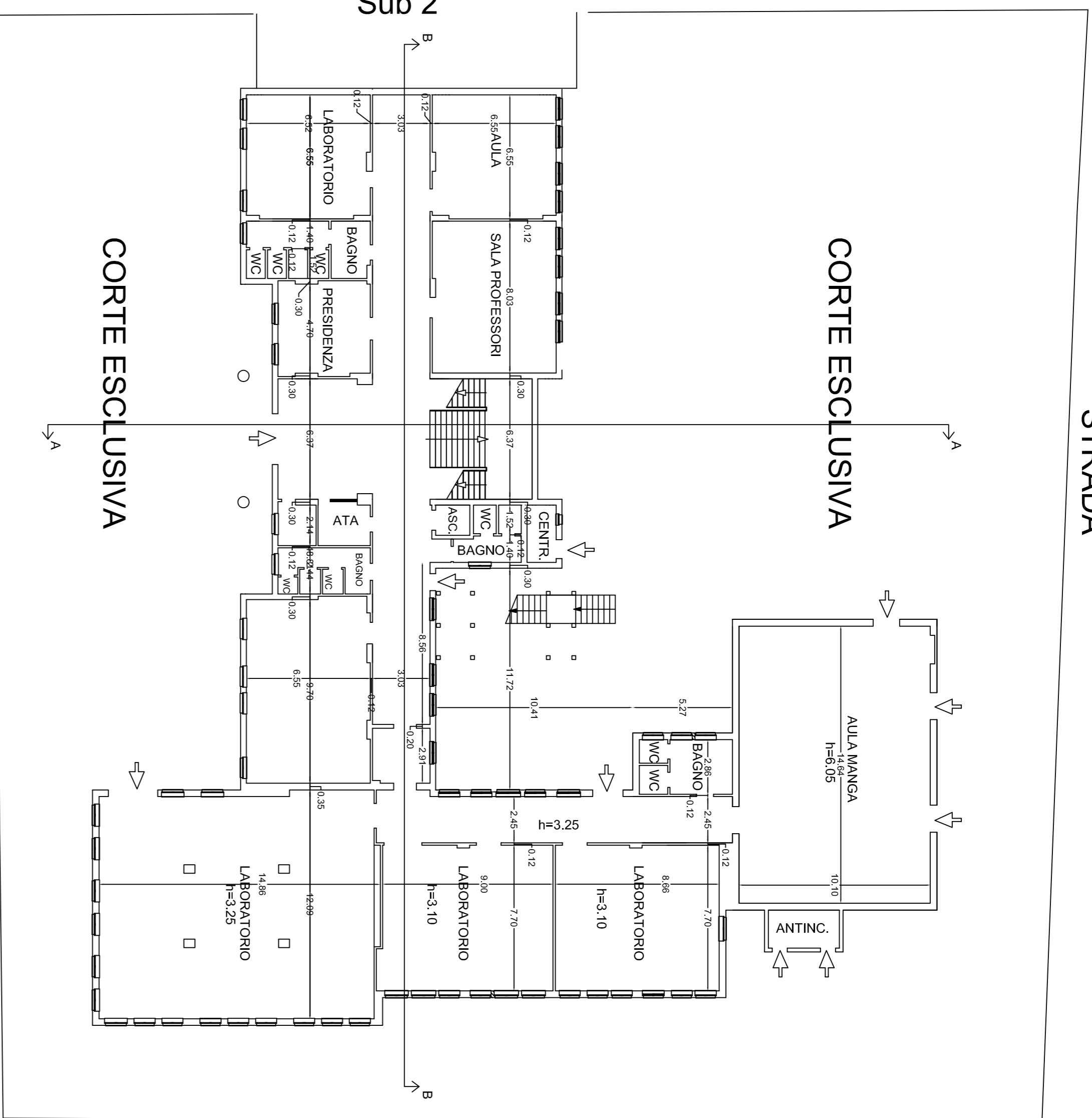


PIANO TERRA
h=3.00

STRADA



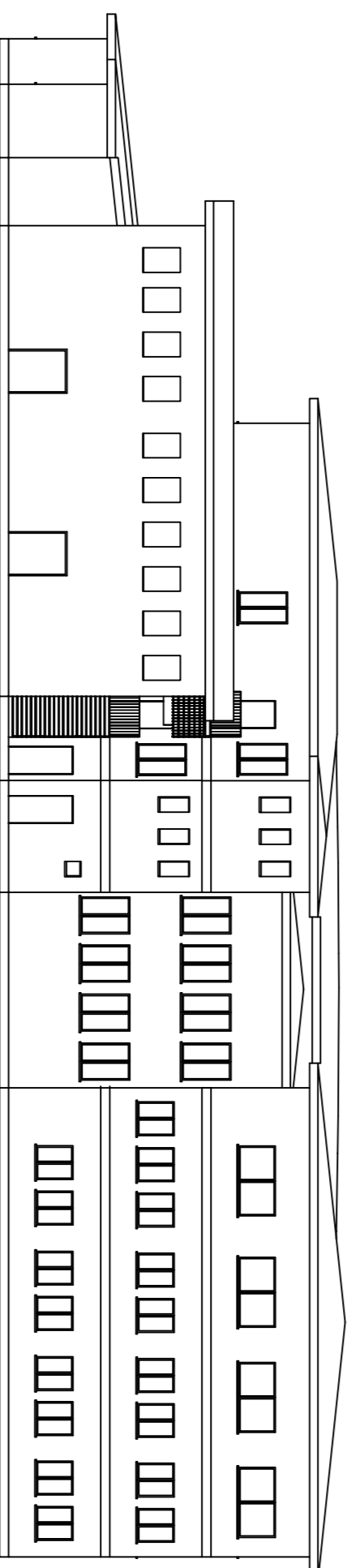
Part. 1138
Sub 2

Part. 292

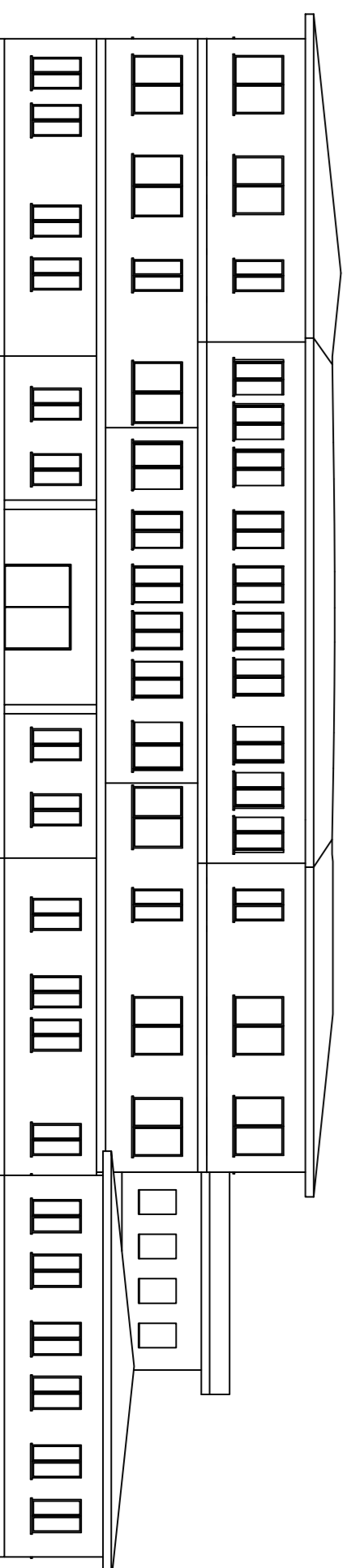
Via Colonne

CORTE ESCLUSIVA

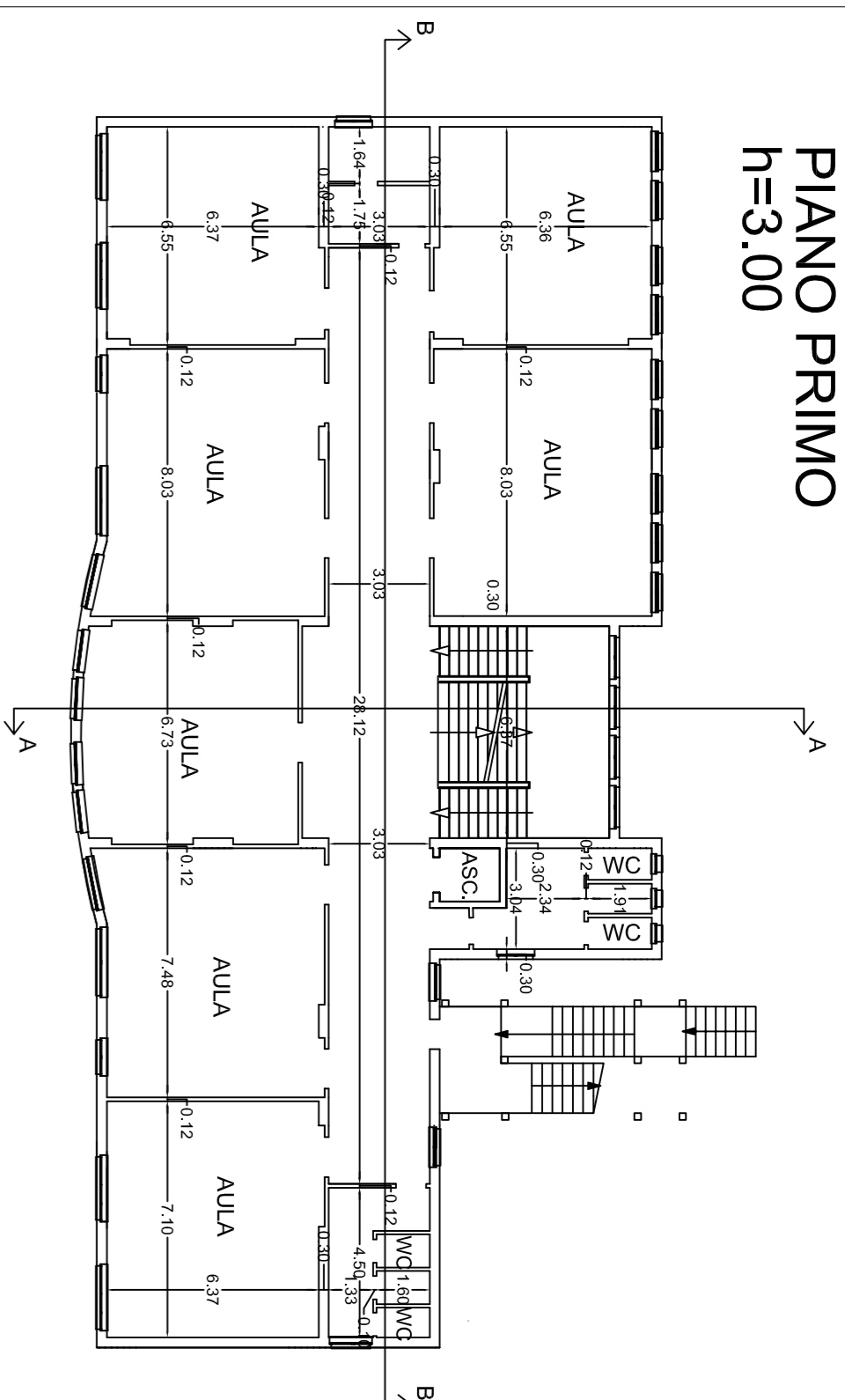
Prospetto Ovest



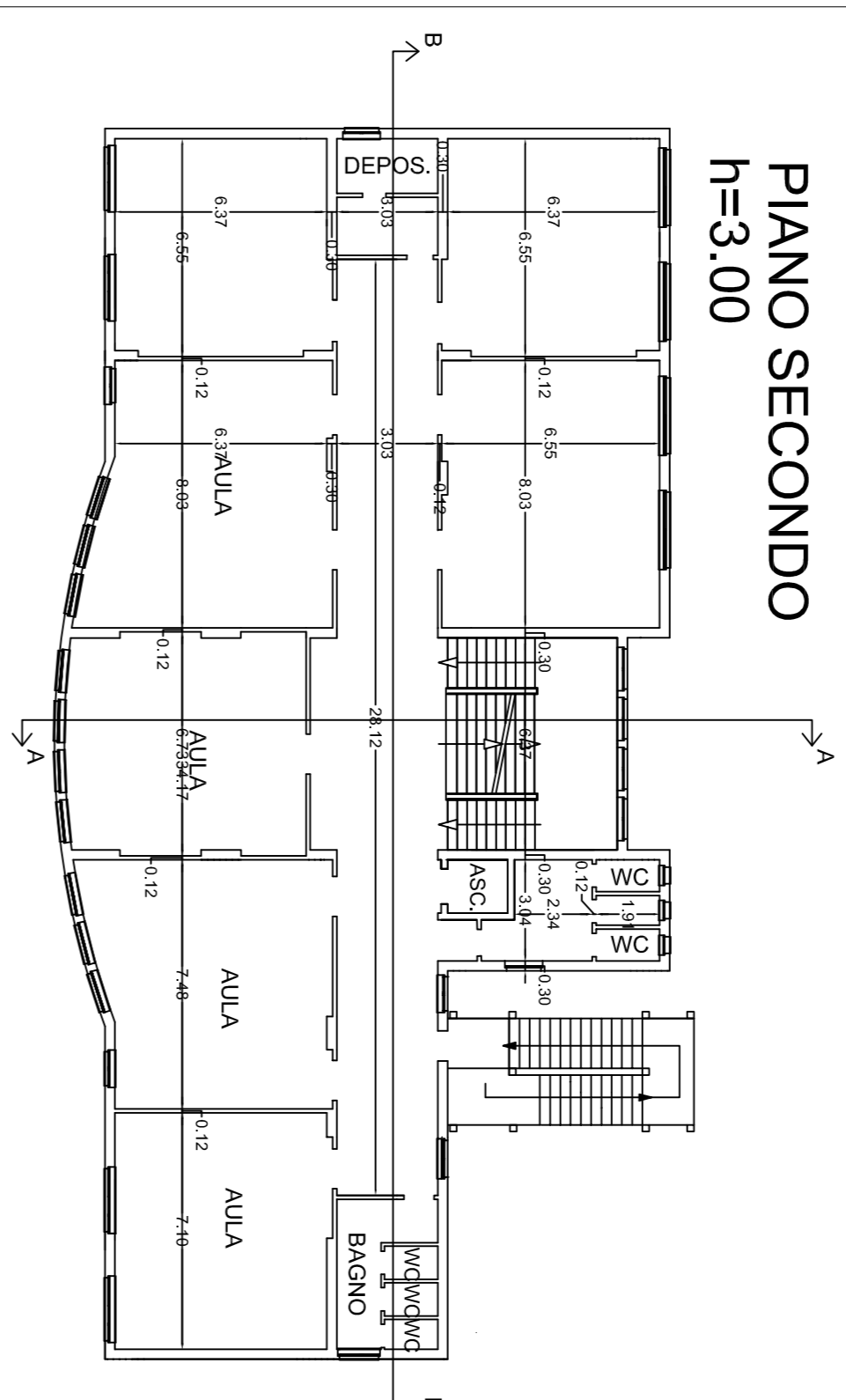
Prospetto Est



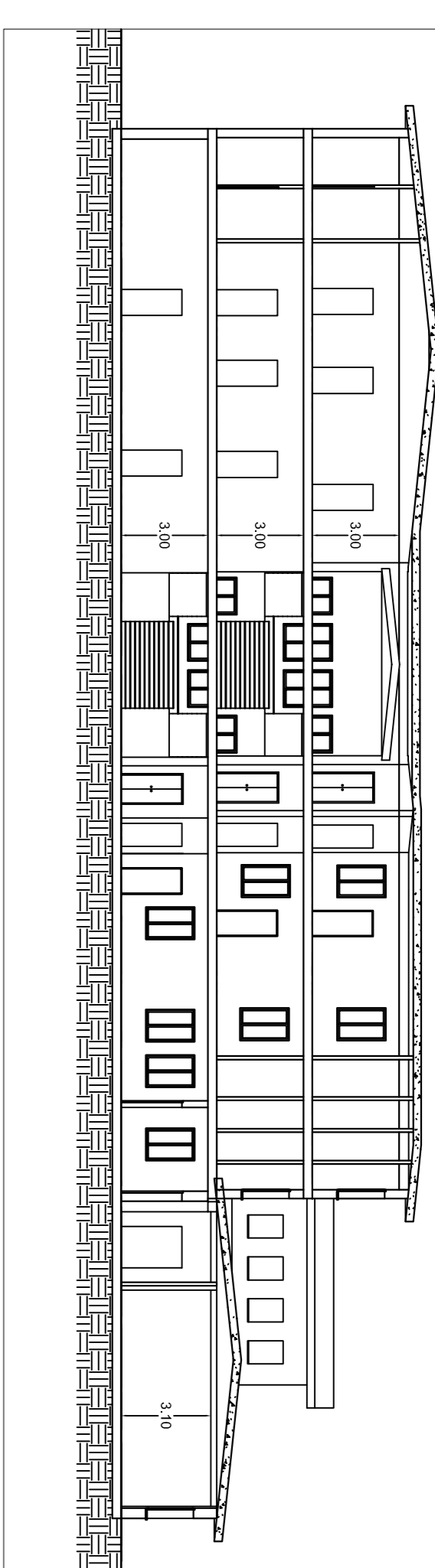
PIANO PRIMO
h=3.00



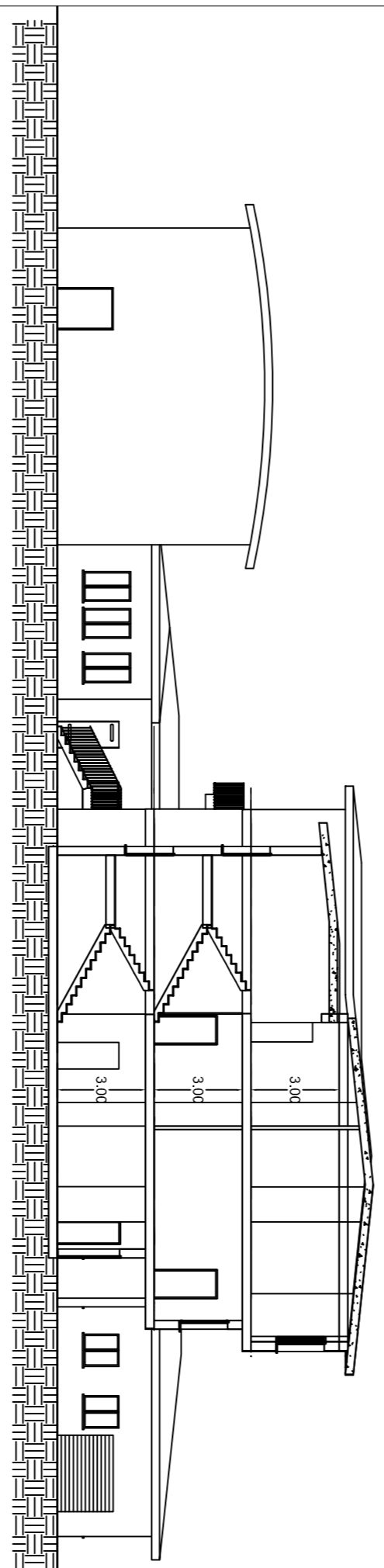
PIANO SECONDO
h=3.00



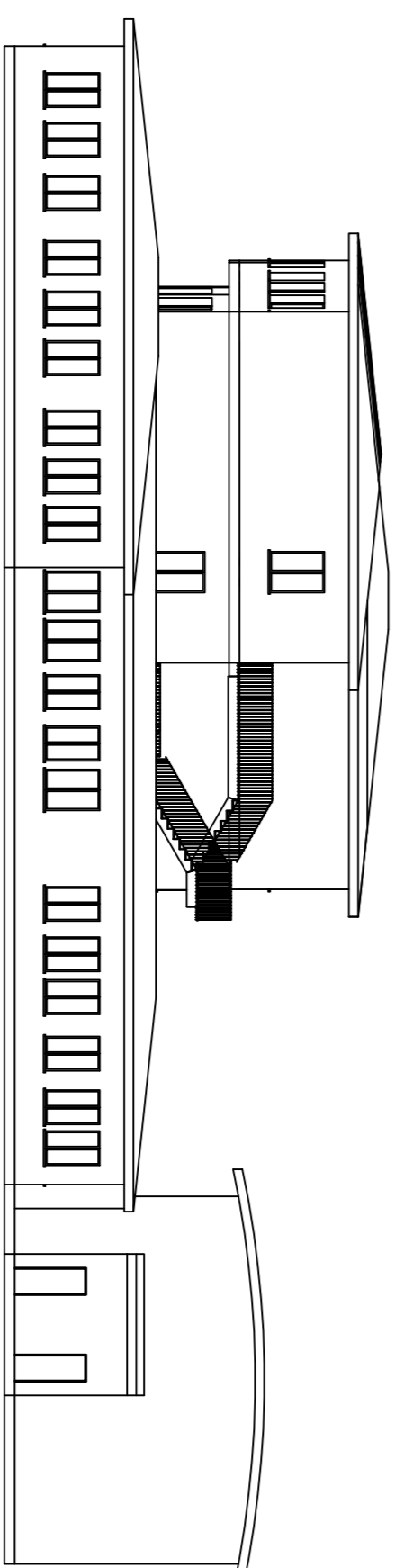
Sezione B-B



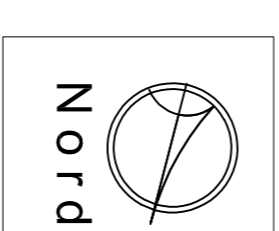
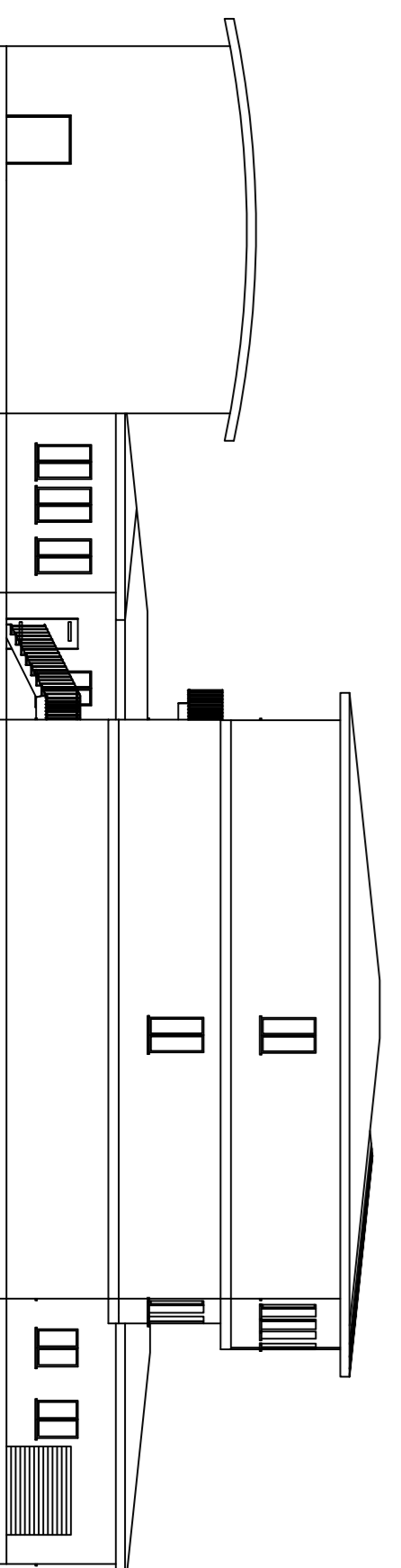
Sezione A-A



Prospetto Nord



Prospetto Sud



AGENZIA DEL DEMANIO
DIREZIONE REGIONALE CALABRIA
SERVIZI TECNICI



P.F.T.E. REALIZZAZIONE DELLA NUOVA SEDE
GUARDIA DI FINANZA
CITTÀ DI PAOLA
SCHEDA CS0150

PROGETTO DI FATTIBILITÀ TECNICO ECONOMICA

PIANTE - PROSPETTI - SEZIONI
STATO DI FATTO

I TECNICI ISTRUTTORI

ING. SALVATORE GIULIO



IL RESPONSABILE SERVIZI TECNICI

ING. SALVATORE COSTANTINO



CODICE ELABORATO

TAV 02

SCALA

1:200

PROTOCOLLO E DATA
2018/05/15
PROCALISTE da 3/1/2018