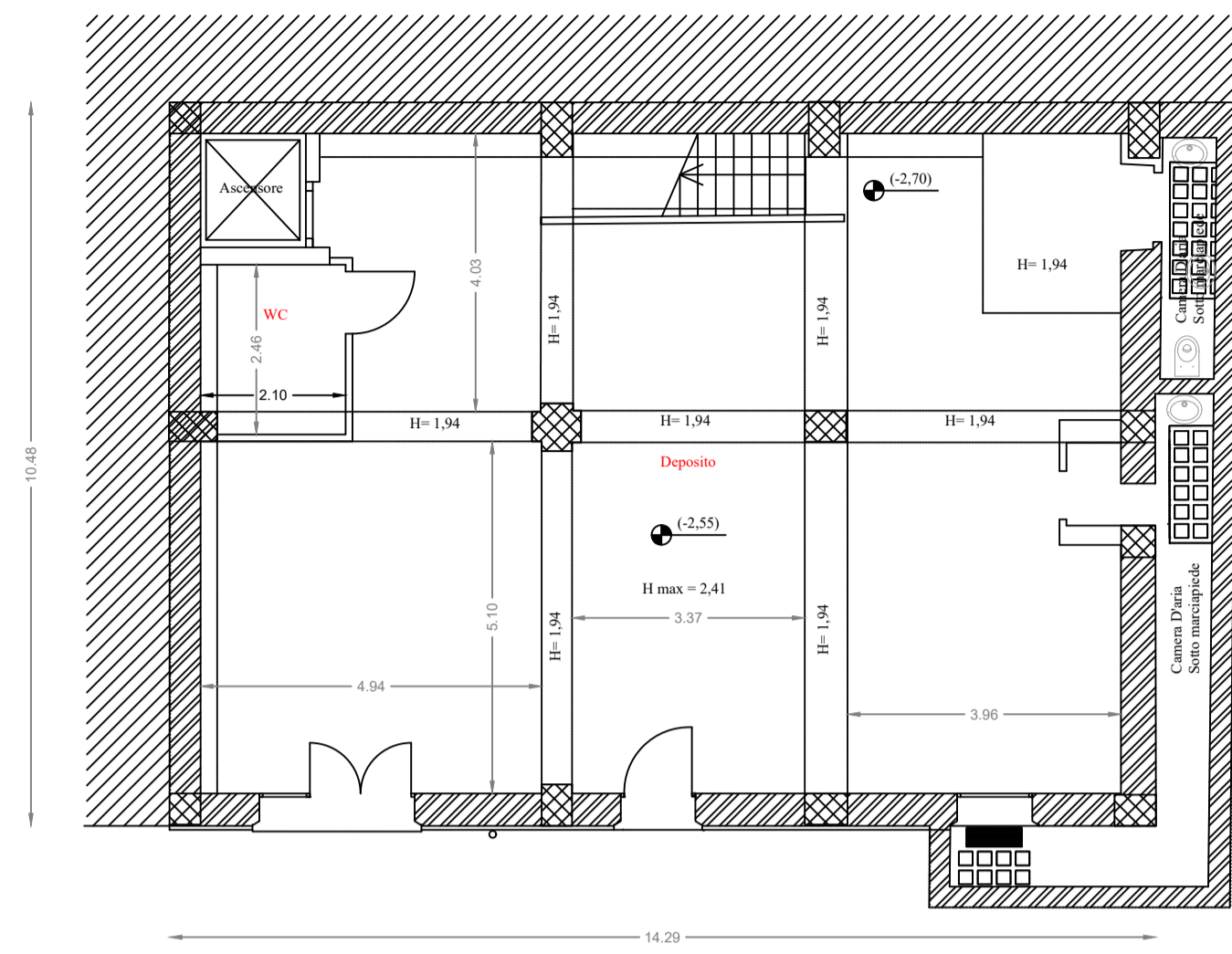
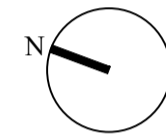


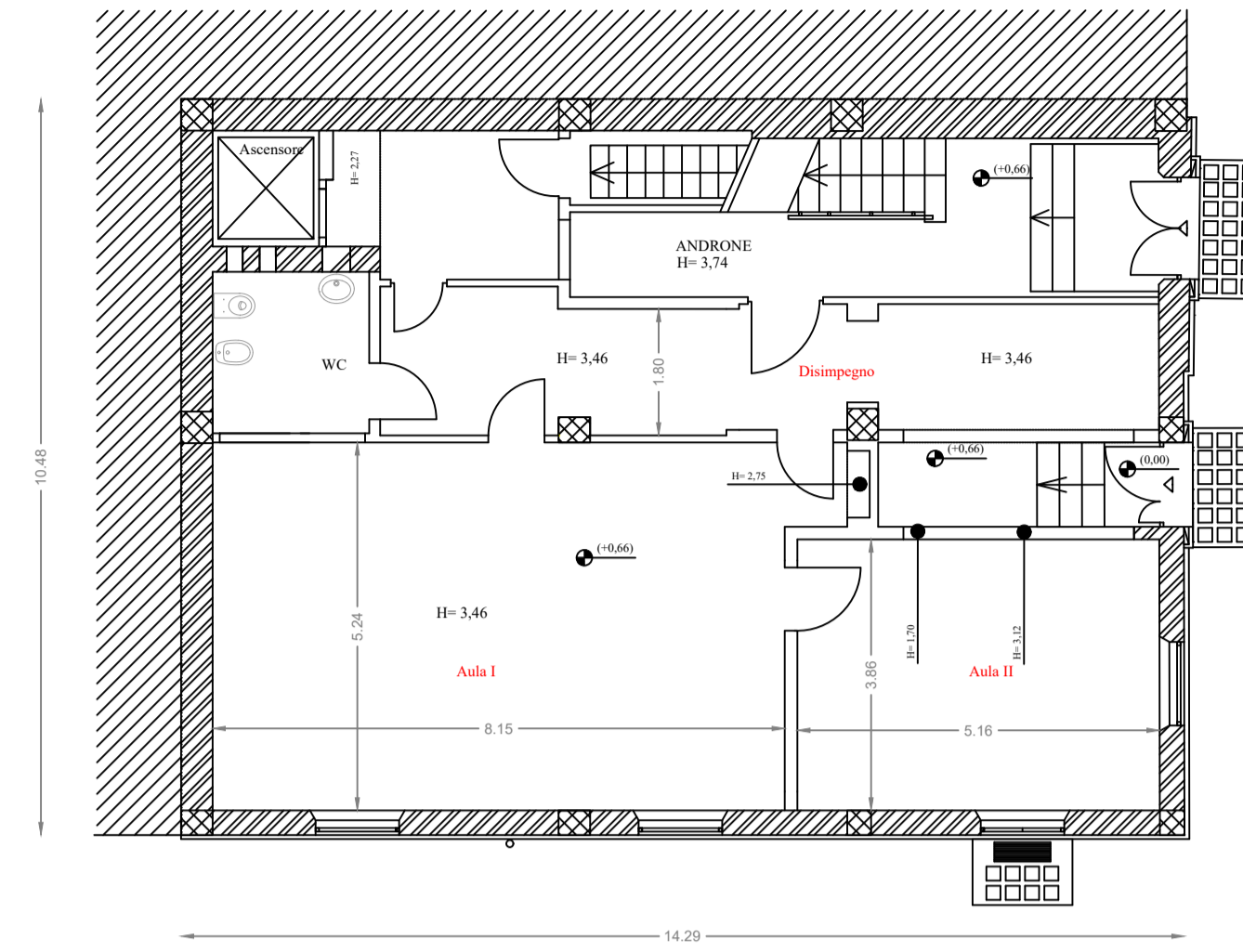
PIANTA PIANO SEMINTERRATO



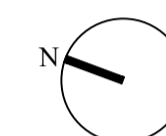
- Legenda**
- Pilastrini in C.A.
 - Muratura portante esterna in mattoni pieni di laterizio



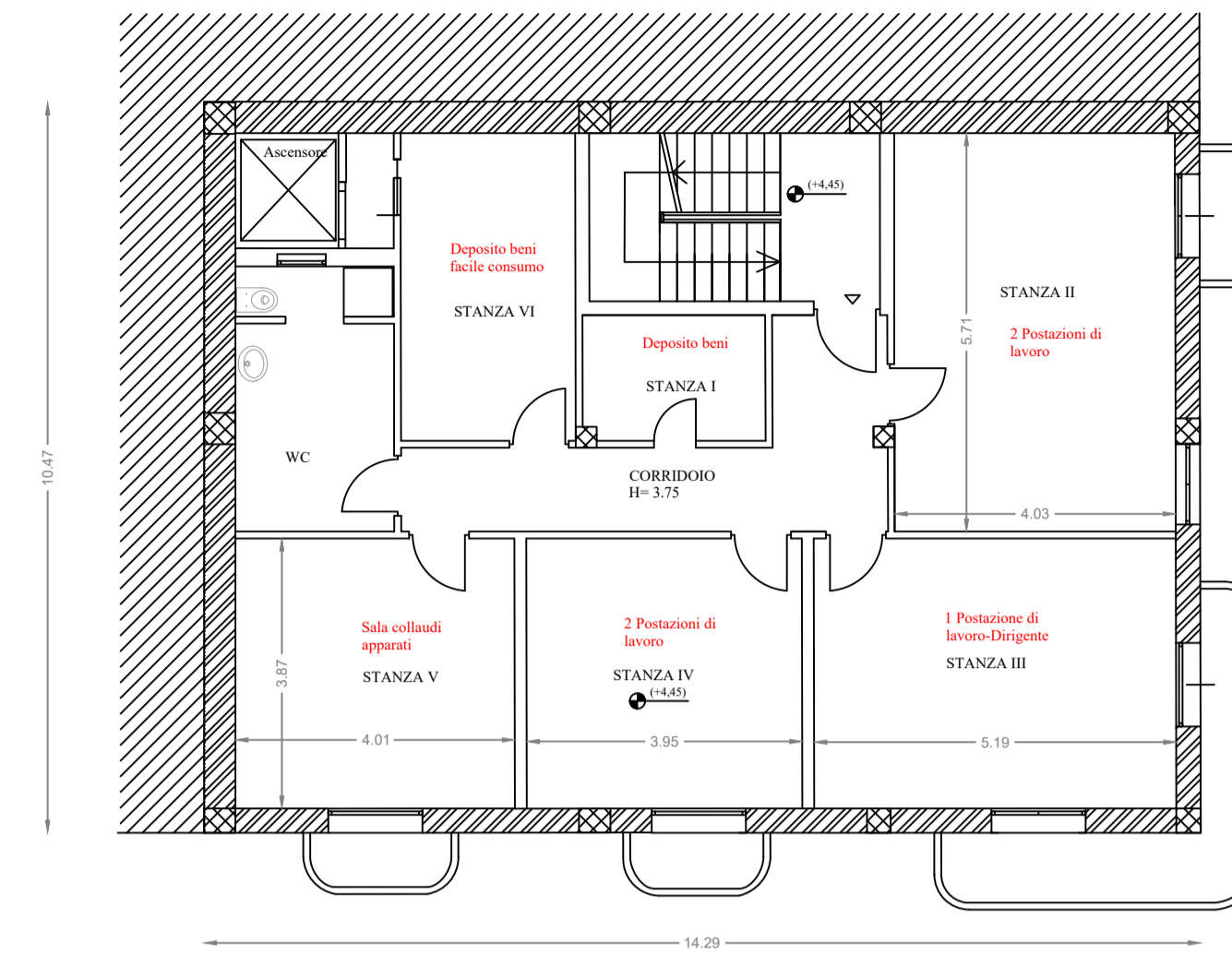
PIANTA PIANO TERRA



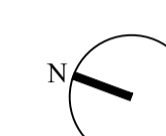
- Legenda**
- Pilastrini in C.A.
 - Muratura portante esterna in mattoni pieni di laterizio



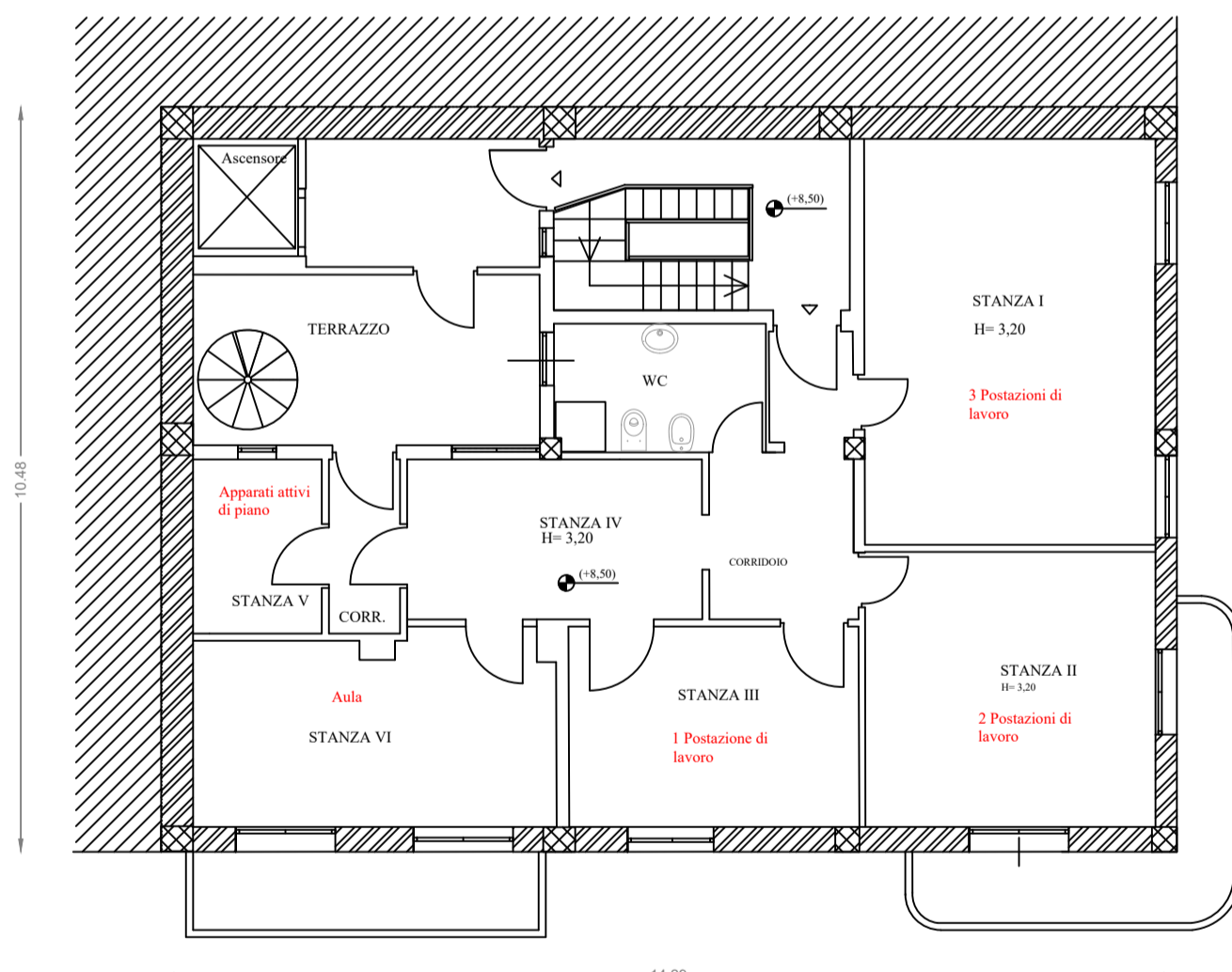
PIANTA PIANO PRIMO



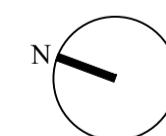
- Legenda**
- Pilastrini in C.A.
 - Muratura portante esterna in mattoni pieni di laterizio



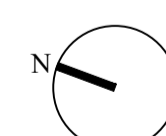
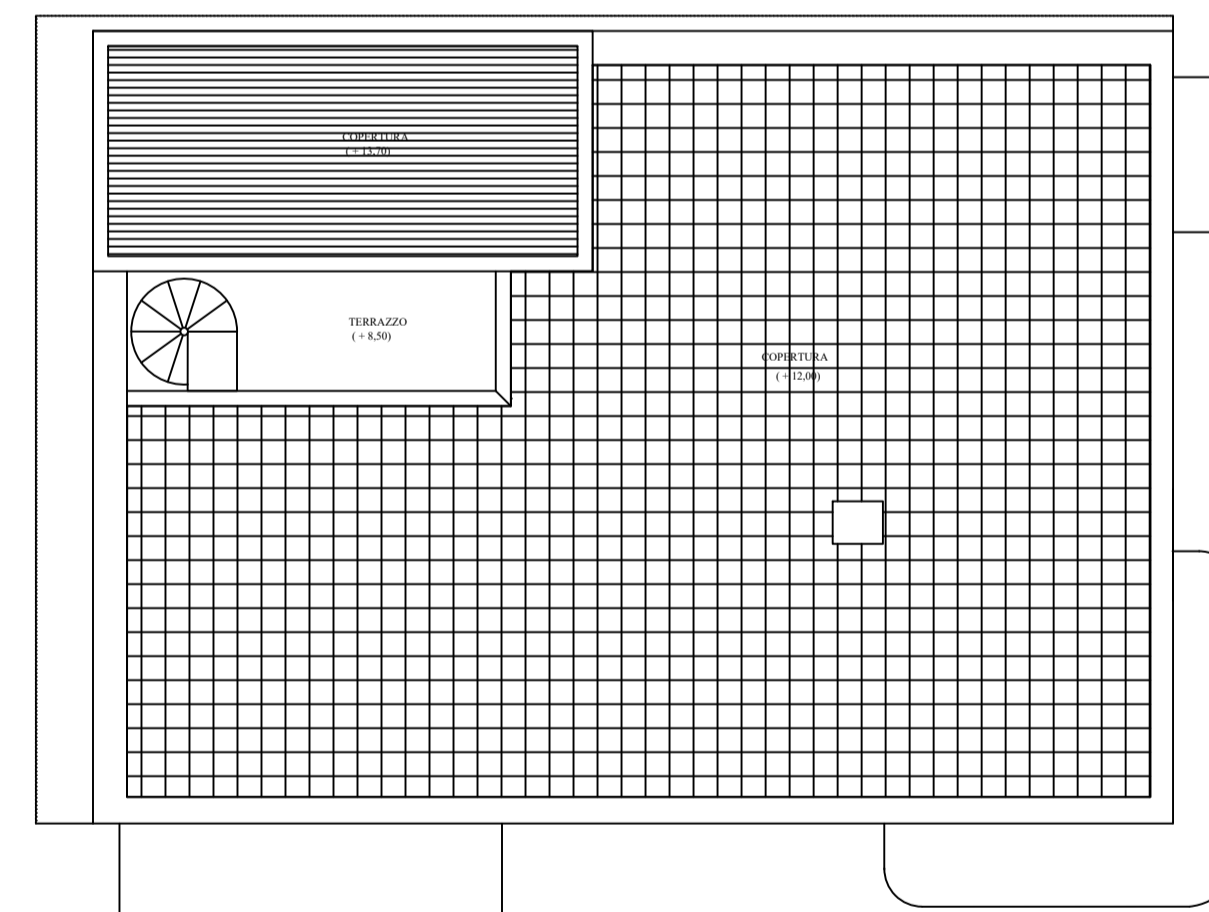
PIANTA PIANO SECONDO



- Legenda**
- Pilastrini in C.A.
 - Muratura portante esterna in mattoni pieni di laterizio



PIANTA PIANO COPERTURE




AGENZIA DEL DEMANIO
 DIREZIONE REGIONALE CALABRIA
 SERVIZI TECNICI

**P.F.T.E. REALIZZAZIONE DELLA NUOVA SEDE
 DEL PRESIDIO CISIA DI REGGIO CALABRIA
 MINISTERO DELLA GIUSTIZIA - CORTE D'APPELLO
 COMUNE DI REGGIO CALABRIA (RC)
 SCHEDA RCBP071**

PROGETTO DI FATTIBILITÀ TECNICA ED ECONOMICA

**DISTRIBUZIONE INTERNA PIANTE
 STATO FUTURO**

IL TECNICO ISTRUTTORE



ING. SALVATORE VIRGILIO

Salvatore Virgilio

IL RESPONSABILE SERVIZI TECNICI



ING. SALVATORE CONCETTINO

Salvatore Concettino

CODICE ELABORATO
TAV 12

SCALA
1:100

PROTOCOLLO E DATA
2019/10558/DRCAL/STE del 17/06/2019