

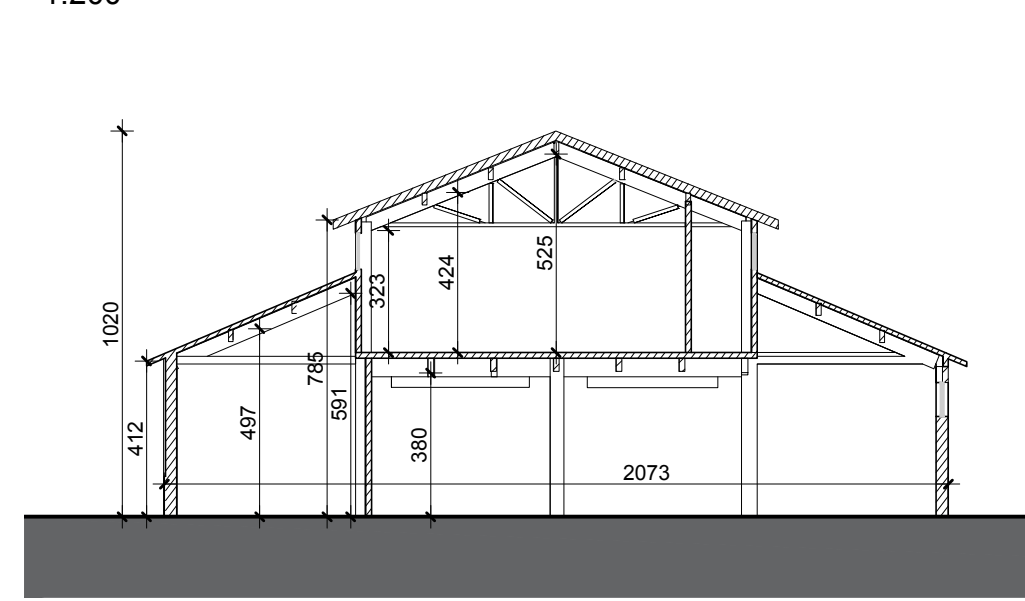
EDIFICIO MAGAZZINO

1:200

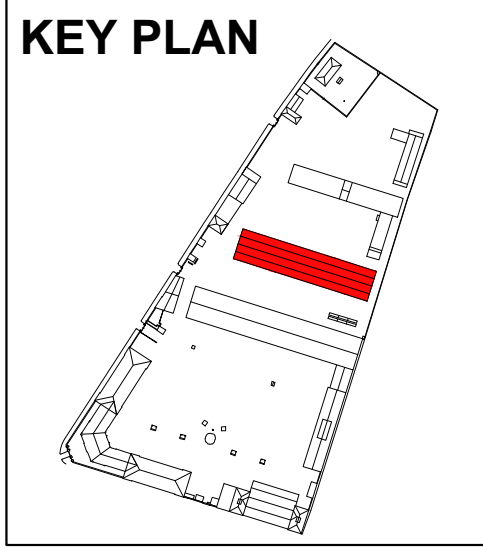
Calcolo SLP

Piano Terra	Piano Primo
A: 92.73x5.07= 470.14	D: 10.61x92.65= 983.02
B: 92.73x10.56= 979.23	SLP= 983.02
C: 92.73x5.13= 475.70	SLP_TOT= Piano Terra + Piano Primo
SLP 1925.07	2908.9 m²

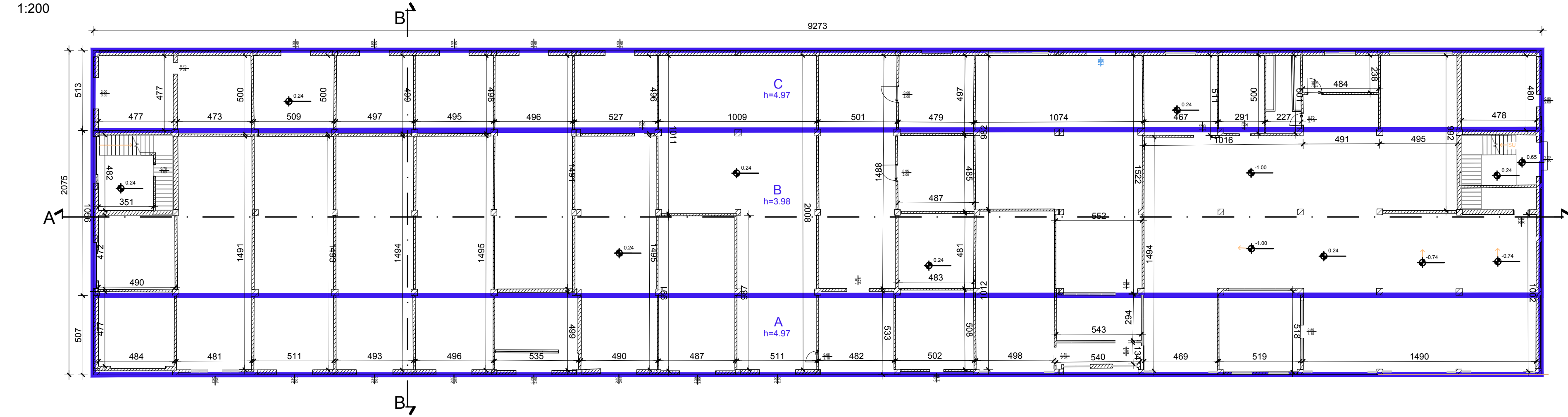
Sezione BB



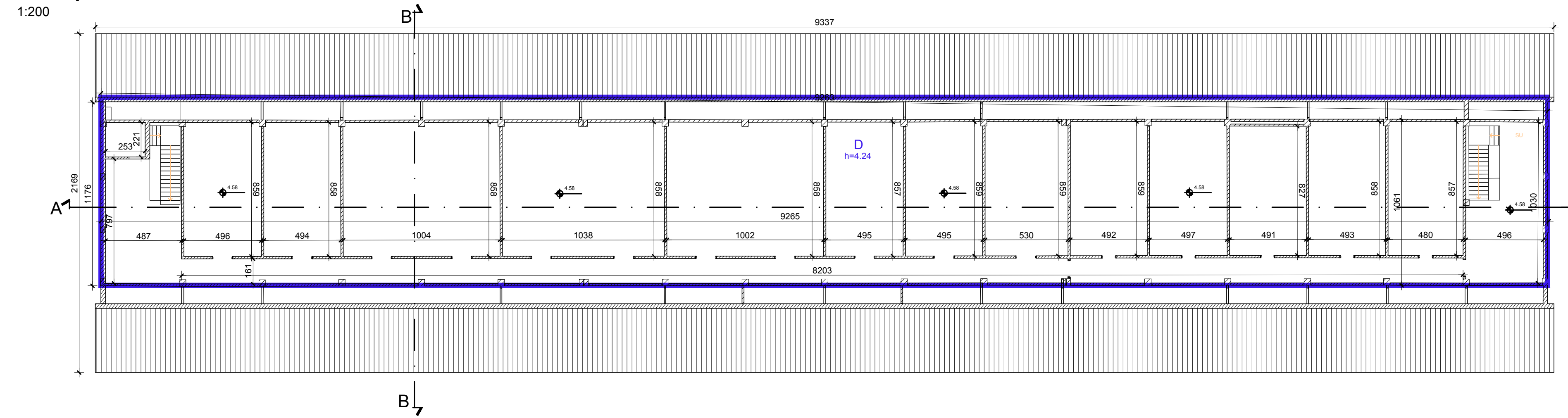
KEY PLAN



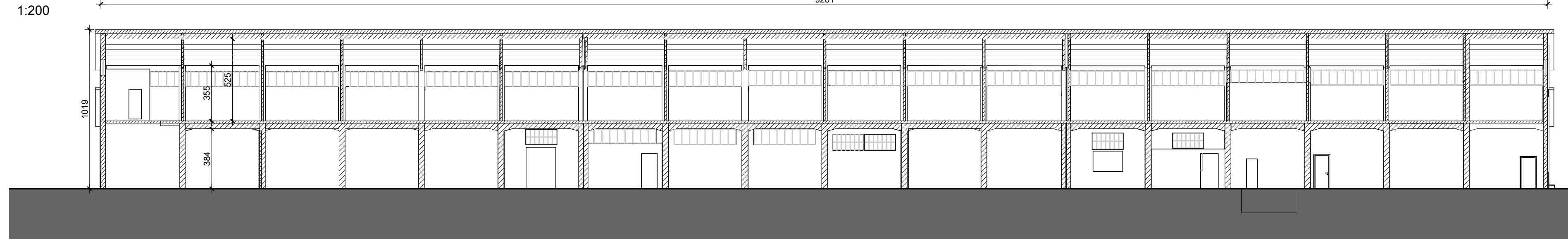
Piano terra



Piano primo



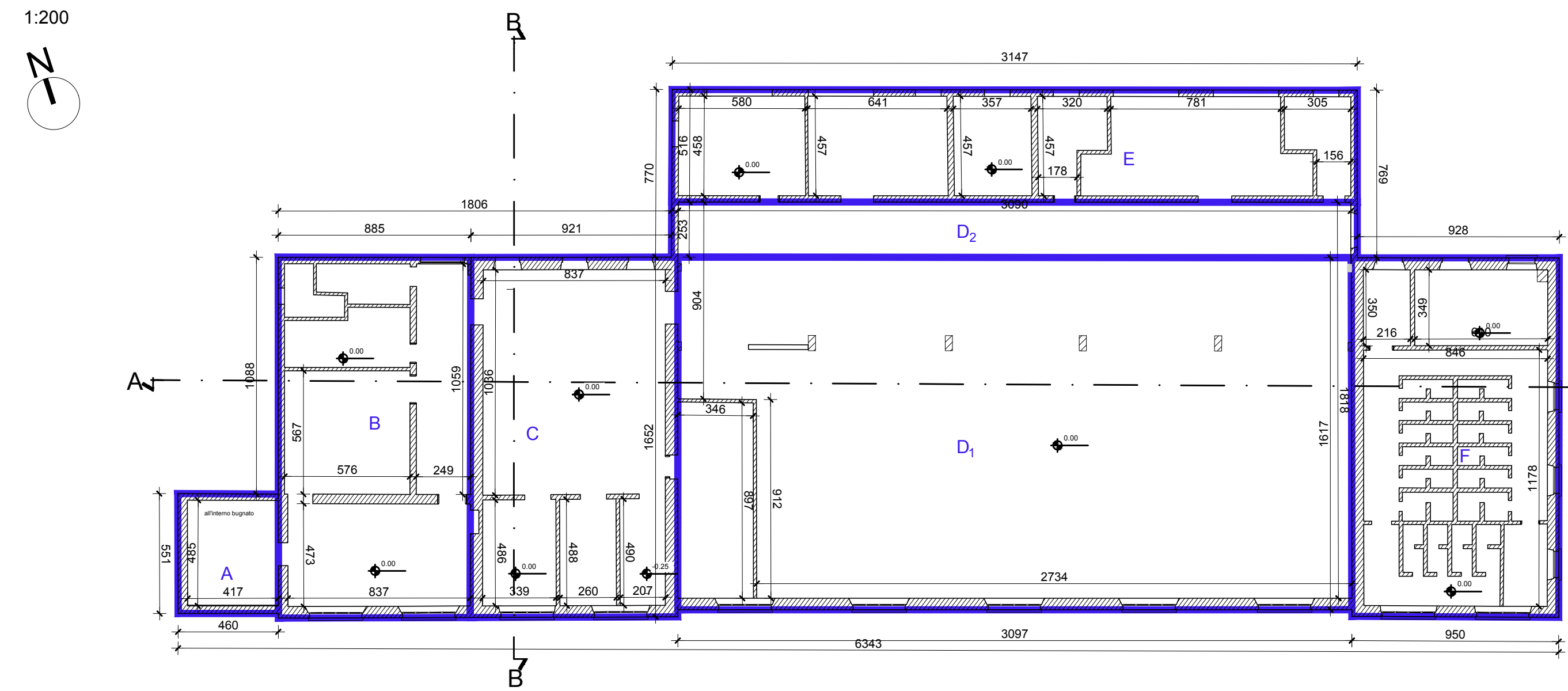
Sezione AA



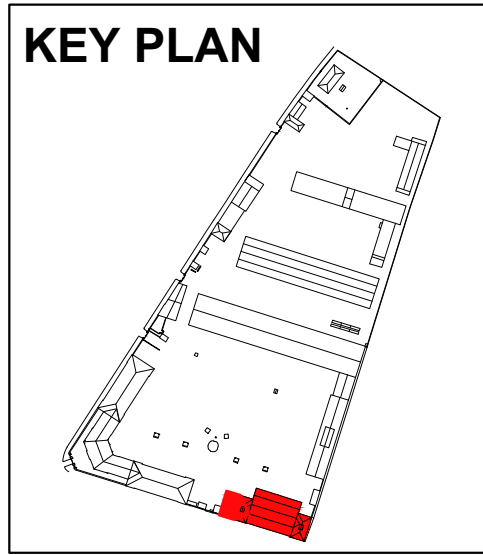
EDIFICIO MENSA

1:200

Piano terra



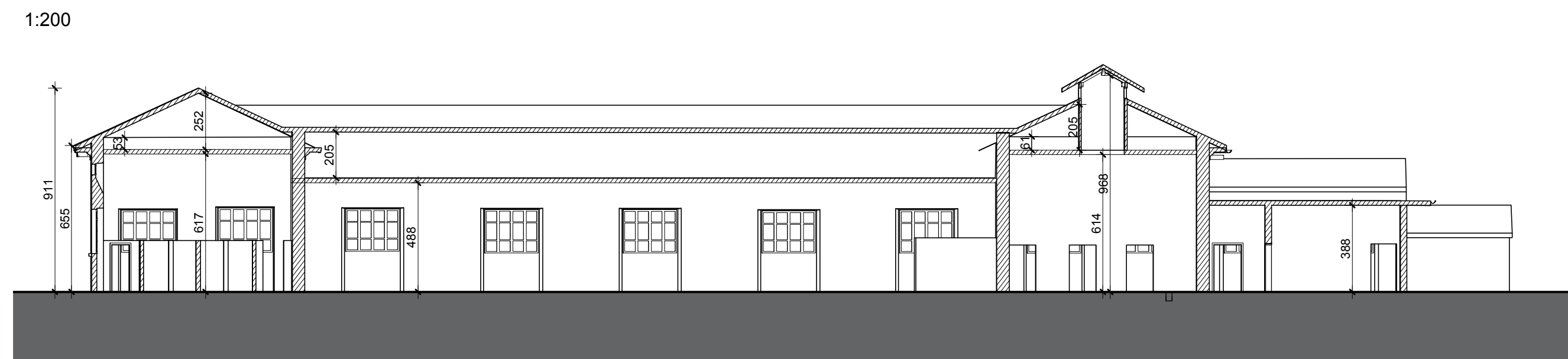
KEY PLAN



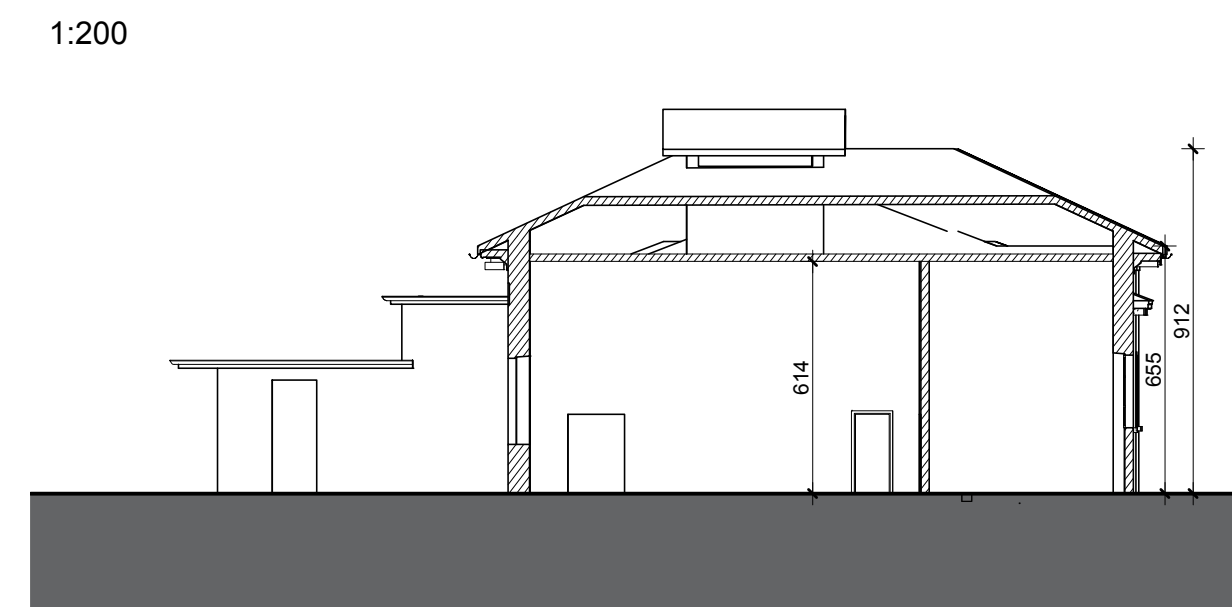
Calcolo SLP

A: 5.51x4.60 m= 25.35 m ²
B: 8.55x16.52 m= 141.25 m ²
C: 9.21x16.52 m= 152.15 m ²
D: 30.97x16.17 m= 500.78 m ²
D ₂ : 31.47x2.53 m= 79.62 m ²
E: 31.47x5.16 m= 162.38 m ²
F: 9.50x16.51 m= 156.84 m ²
SLP= A+B+C+D1+D2+E+F= 1218.37 m²

Sezione AA

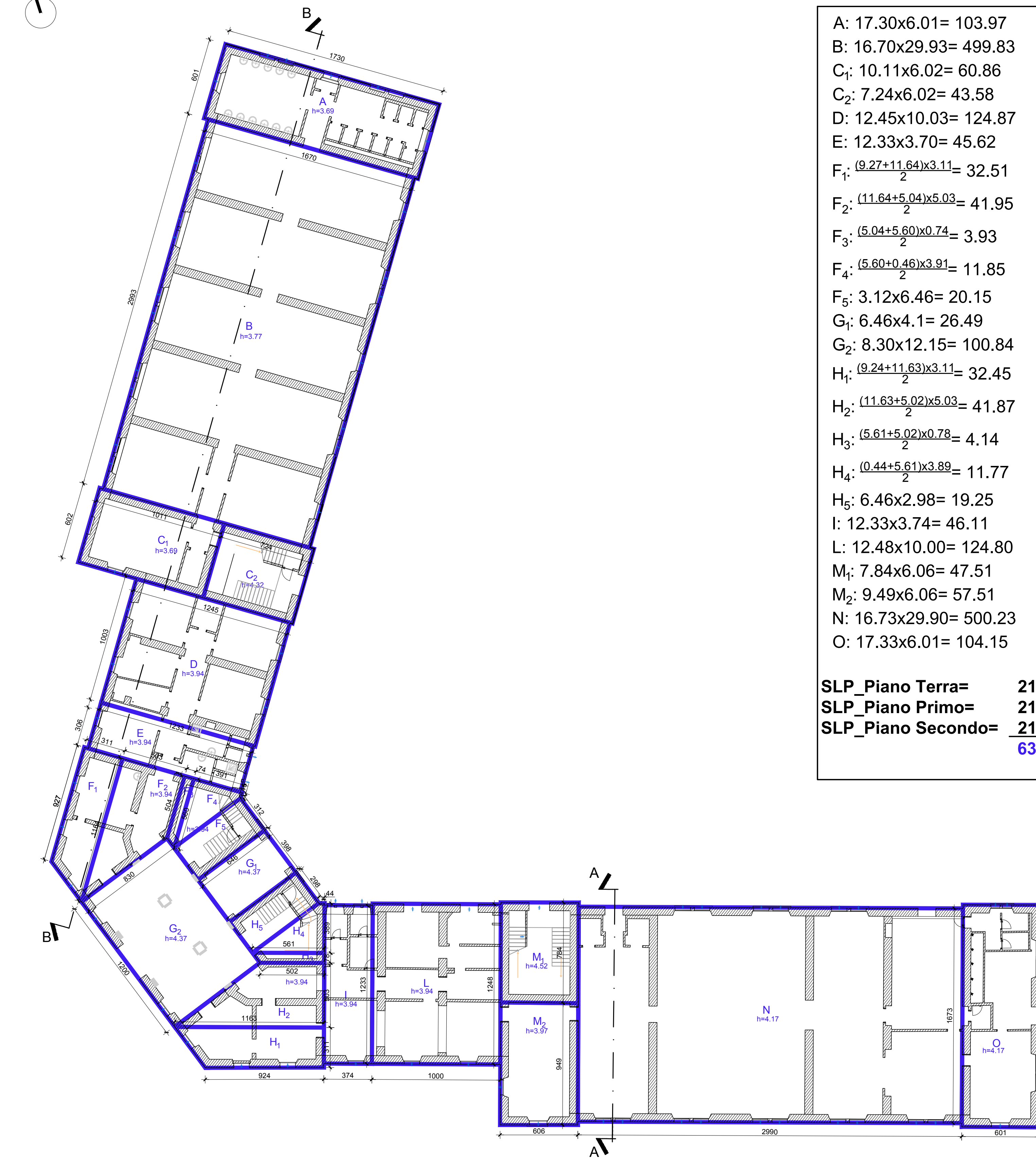
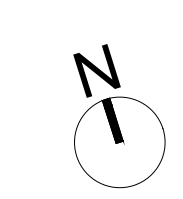


Sezione BB



PALAZZINA COMANDO

1:200



SLP_Piano Terra

A: 17.30x6.01= 103.97	SLP_Piano Terra= 2106.24 m ²
B: 16.70x29.93= 499.83	SLP_Piano Primo= 2106.24 m ²
C ₁ : 10.11x6.02= 60.86	SLP_Piano Secondo= 2106.24 m ²
C ₂ : 7.24x6.02= 43.58	6318.72 m²
D: 12.45x10.03= 124.87	
E: 12.33x3.70= 45.62	
F ₁ : (9.27+11.64)/2 x 3.11= 32.51	
F ₂ : (11.64+5.04)/2 x 5.03= 41.95	
F ₃ : (5.04+5.60)/2 x 0.74= 3.93	
F ₄ : (5.60+0.46)/2 x 3.91= 11.85	
F ₅ : 3.12x6.46= 20.15	
G ₁ : 6.46x4.1= 26.49	
G ₂ : 8.30x12.15= 100.84	
H ₁ : (9.24+11.63)/2 x 3.11= 32.45	
H ₂ : (11.63+5.02)/2 x 5.03= 41.87	
H ₃ : (5.61+5.02)/2 x 0.78= 4.14	
H ₄ : (0.44+5.61)/2 x 3.89= 11.77	
H ₅ : 6.46x2.98= 19.25	
I: 12.33x3.74= 46.11	
L: 12.48x10.00= 124.80	
M ₁ : 7.84x6.06= 47.51	
M ₂ : 9.49x6.06= 57.51	
N: 16.73x29.90= 500.23	
O: 17.33x6.01= 104.15	

Calcolo SLP complessiva

SLP EDIFICIO MAGAZZINO	2908.90 m ²
SLP MENSA	1218.37 m ²
SLP PALAZZINA COMANDO	6318.72 m ²
TOTALE	10446,00 m²



U. O. Servizi Tecnici



Piano Attuativo - Censimento di proprietà dello Stato denominato "ex Caserma Papa", sito in Brescia, Via Franchi/Via Oberdan

Committente:
AGENZIA DEL DEMANIO
CORSO MONFORTE N. 32 - 20122 MILANO

Proprietà:
DEMANIO DELLO STATO

STATO DI FATTO
PIANTE E SEZIONI: EDIFICIO MAGAZZINO - MENSA - PALAZZINA COMANDO

TAV.	REV.	SCALA:	DATA EMISSIONE:
03	00	1:200	25/10/2019

Il progettista
Arch. Michele di Bella