



Angelo Dugnani
ARCHITETTO
20843 Verano (MB)
Via Comasina n° 28
Tel / Fax 0362.90.98.45

COLLABORATORI
geom. Stefano Primavesi
geom. Viviana Vergani

ALLEGATO

F

COMMITTENTE

**Agenzia del Demanio
Direzione Regionale Lombardia**

OGGETTO

**Rilievo architettonico
Ex Caserma Melegnano
via Fanfulla/via Lodino - LODI**

CONTENUTO

Calcolo dei volumi

IL TECNICO

FIRMA

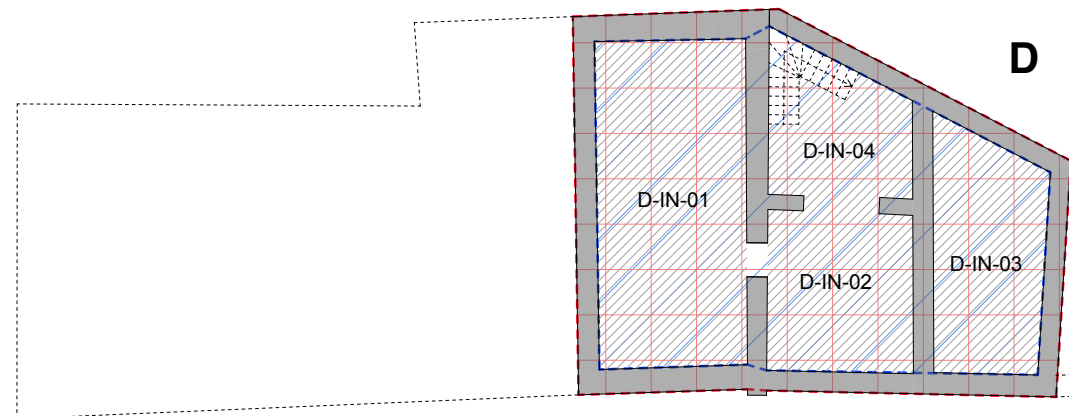
ORDINE DEGLI ARCHITETTI,
PIANIFICATORI, PAESAGGISTI E
CONSERVATORI DELLA PROVINCIA
DI MONZA E DELLA BRIANZA

ANGELO
DUGNANI
ARCHITETTO




1098

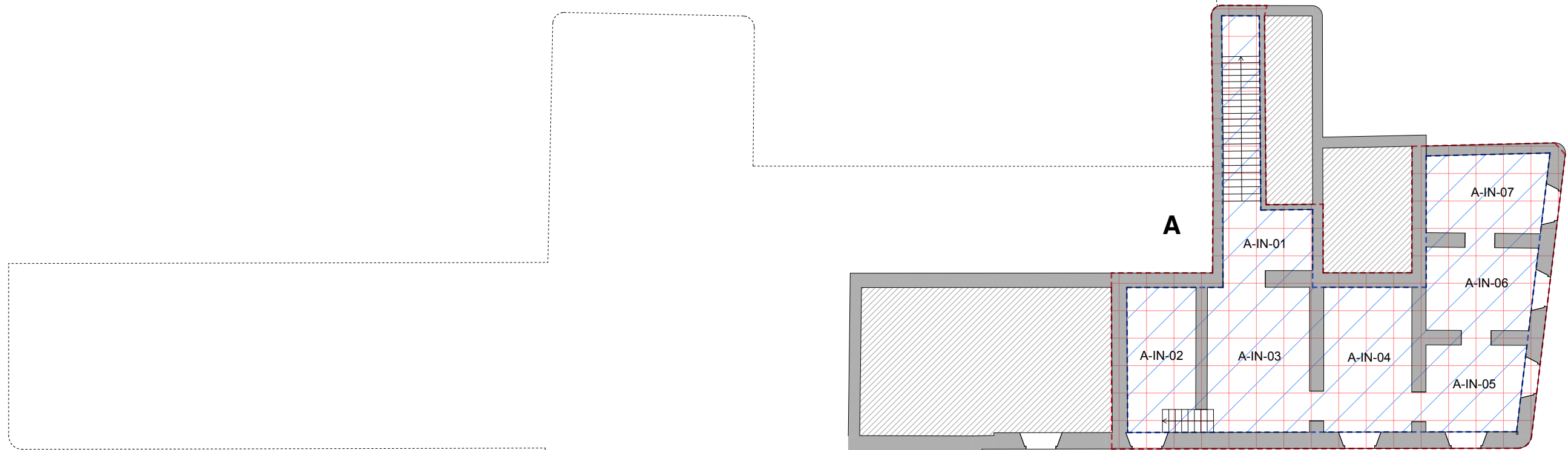
DATA

Emiss. Dic. 2017
Agg. Gen. 2018



D

- LEGENDA**
-  sup. lorde esclusi muri perimetrali
 -  sup. lorde esclusi compresi perimetrali
 -  superficie scoperta



A



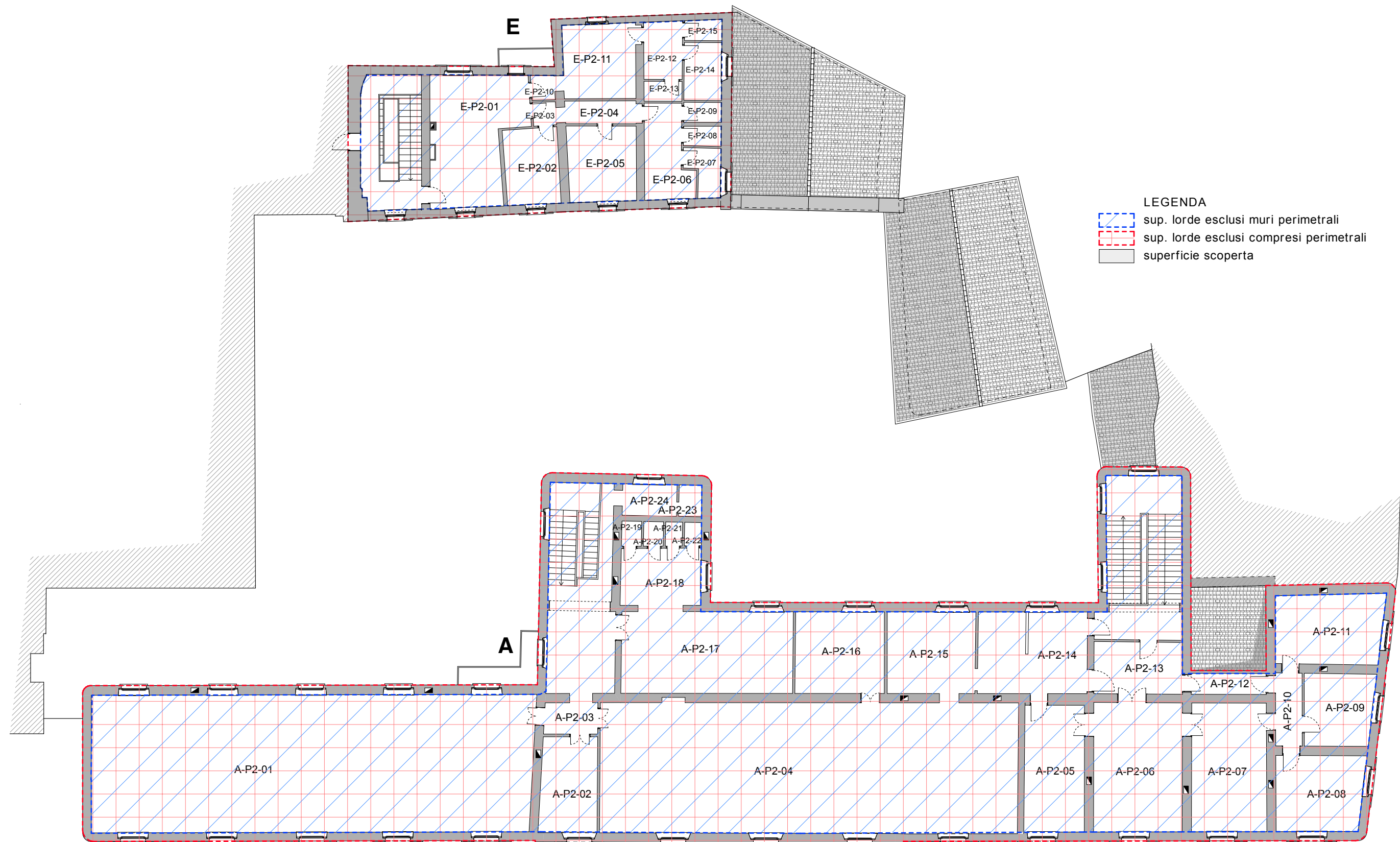
LEGENDA
 sup. lorde esclusi muri perimetrali
 sup. lorde esclusi compresi perimetrali
 superficie scoperta

PIANO TERRA



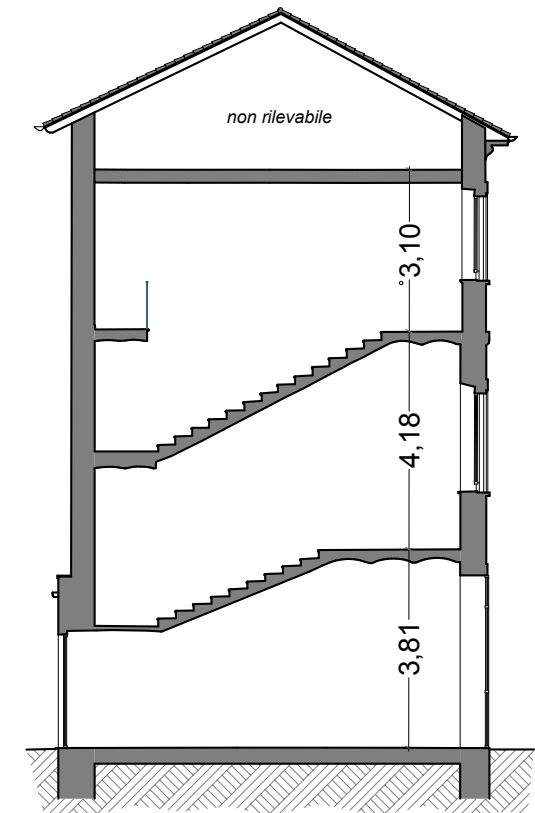
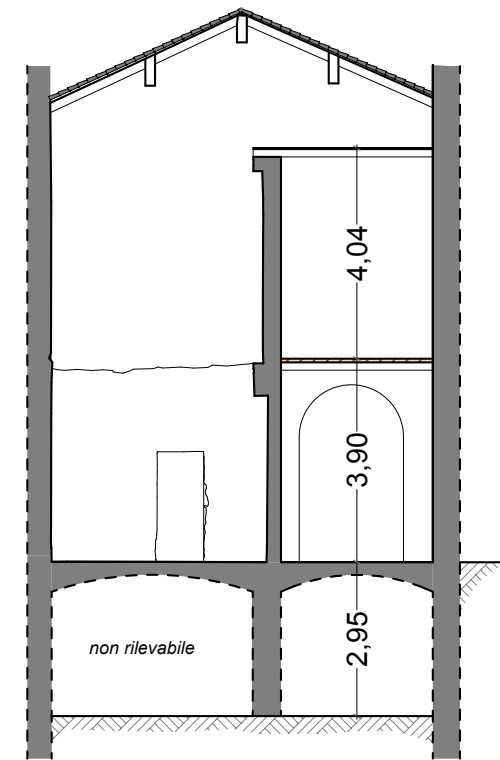
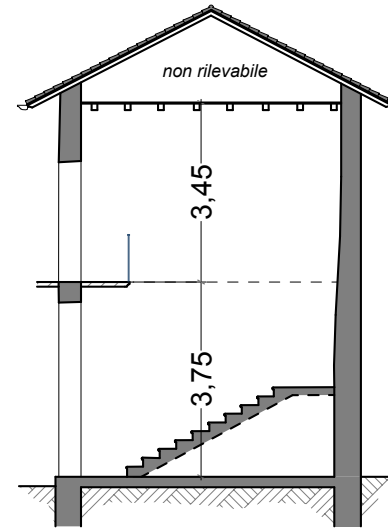
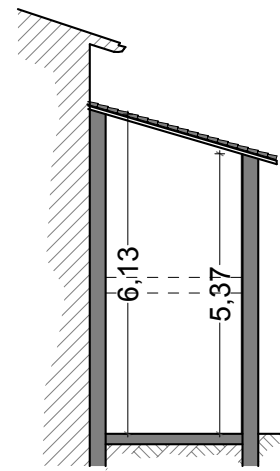
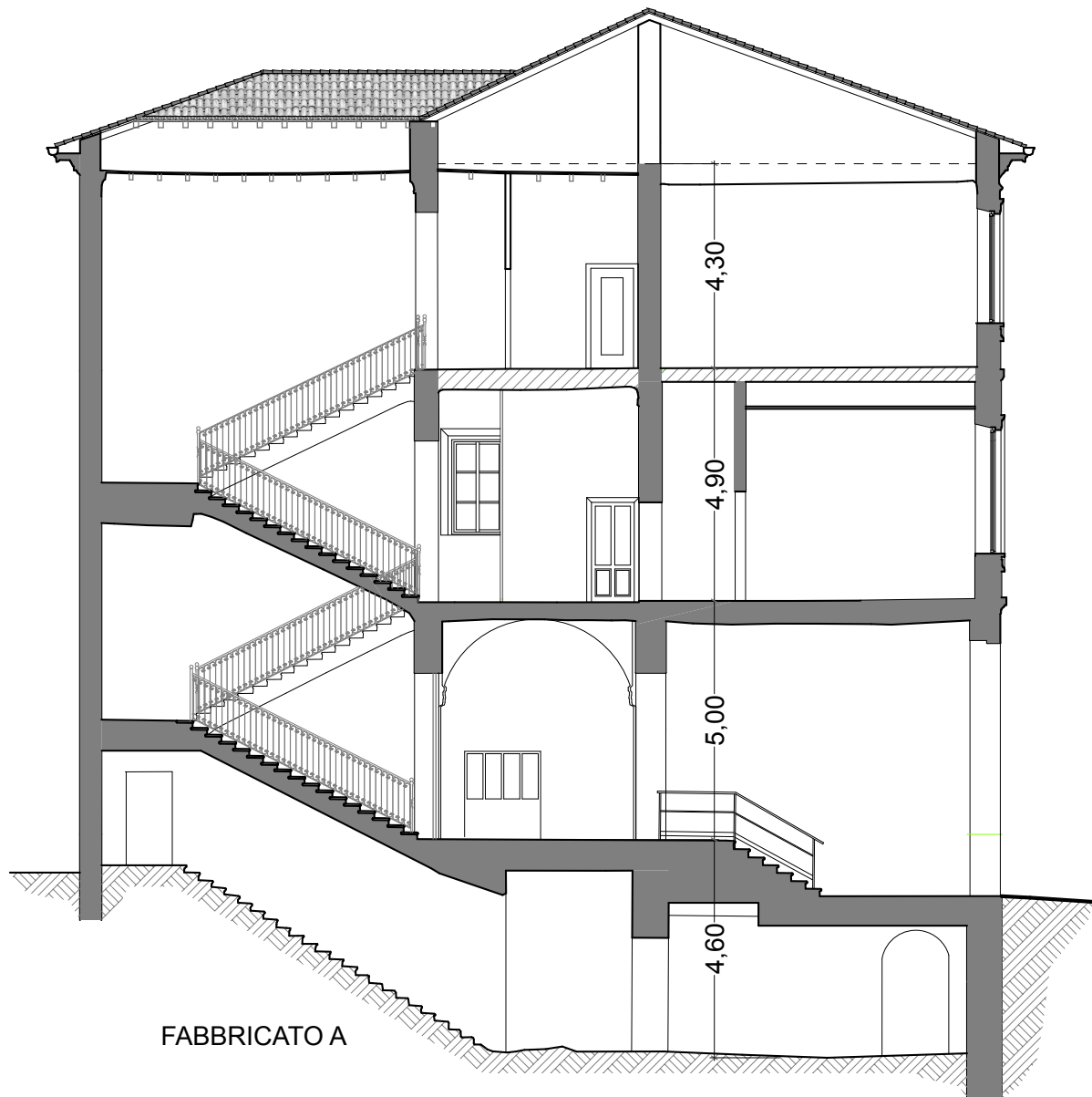
LEGENDA
 sup. lorde esclusi muri perimetrali
 sup. lorde esclusi compresi perimetrali
 superficie scoperta

PIANO PRIMO



PIANO SECONDO

ALTEZZE LORDE VIRTUALI PER CALCOLO VOLUMI



FABBRICATO A

PIANO INTERRATO				PIANO TERRA				PIANO PRIMO				PIANO SECONDO			
locale	superficie netta	altezza	volume netto	locale	superficie netta	altezza	volume netto	locale	superficie netta	altezza	volume netto	locale	superficie netta	altezza	volume netto
scala dx	14,02	14,02 ^	196,56	scala sx	16,87	5,00 ^	84,35	scala sx	24,17	4,90 ^	118,43	scala sx	36,94	4,10 ^	151,45
A-IN-01	10,41	3,22 *	33,52	scala dx	22,88	5,00 ^	114,40	scala dx	32,59	4,90 ^	159,69	scala dx	34,20	4,10 ^	140,22
A-IN-02	19,06	2,25	42,89	A-PT-01	10,31	4,63	47,74	A-P1-01	30,80	4,50	138,60	A-P2-01	163,03	4,44	723,85
A-IN-03	23,78	1,87 *	47,31	A-PT-02	17,91	3,85 *	68,95	A-P1-02	33,49	4,50	150,71	A-P2-02	14,62	4,26	62,28
A-IN-04	24,37	3,58 *	87,24	A-PT-03	28,76	3,90 *	112,16	A-P1-03	26,36	4,50	118,62	A-P2-03	4,50	4,26	19,17
A-IN-05	15,84	3,32 *	52,59	A-PT-04	29,61	3,77 *	111,63	A-P1-04	47,64	4,53	215,81	A-P2-04	146,94	4,20	617,15
A-IN-06	17,05	3,38 *	57,63	A-PT-05	33,09	3,77 *	124,75	A-P1-05	18,03	4,53	81,68	A-P2-05	20,44	4,30	87,89
A-IN-07	17,90	3,32 *	59,43	A-PT-06	26,20	3,70 *	96,94	A-P1-06	19,16	4,57	87,56	A-P2-06	30,77	3,88	119,39
				A-PT-07	27,48	3,85 *	105,80	A-P1-07	27,82	4,57	127,14	A-P2-07	25,90	3,93	101,79
				A-PT-08	3,45	3,70 *	12,77	A-P1-08	32,43	4,60	149,18	A-P2-08	17,68	3,97	70,19
				A-PT-09	3,87	3,70 *	14,32	A-P1-09	43,66	4,60	200,84	A-P2-09	13,30	3,92	52,14
				A-PT-10	4,22	3,70 *	15,61	A-P1-10	30,55	4,60	140,53	A-P2-10	5,21	3,92	20,42
				A-PT-11	5,06	3,70 *	18,72	A-P1-11	20,96	4,60	96,42	A-P2-11	20,05	3,90	78,20
				A-PT-12	9,12	3,70 *	33,74	A-P1-12	22,57	4,01	90,51	A-P2-12	4,19	2,91	12,19
				A-PT-13	72,30	3,72 *	268,96	A-P1-13	7,07	4,01	28,35	A-P2-13	12,35	3,88	47,92
				A-PT-14	20,07	4,11 *	82,49	A-P1-14	26,03	4,01	104,38	A-P2-14	23,71	4,28	101,48
				A-PT-15	25,59	4,09 *	104,66	A-P1-15	17,00	4,01	68,17	A-P2-15	19,33	4,29	82,93
				A-PT-16	17,38	4,02 *	69,87	A-P1-16	12,95	4,10	53,10	A-P2-16	19,53	4,26	83,20
				A-PT-17	18,50	4,02 *	74,37	A-P1-17	19,71	4,02	79,23	A-P2-17	37,65	4,20	158,13
				A-PT-18	19,17	4,00 *	76,68	A-P1-18	5,59	4,10	22,92	A-P2-18	13,07	4,20	54,89
				A-PT-19	18,51	9,85 *	159,50	A-P1-19	4,24	4,82	20,44	A-P2-19	1,33	4,20	5,59
				A-PT-20	2,37	2,40	5,69	A-P1-20	1,35	4,82	6,51	A-P2-20	1,30	4,20	5,46
				A-PT-21	137,03	4,10 *	561,82	A-P1-21	2,30	4,82	11,09	A-P2-21	1,09	4,20	4,58
				A-PT-22	17,16	3,97 *	68,13	A-P1-22	13,09	450,00	5.890,50	A-P2-22	1,07	4,20	4,49
				A-PT-23	6,81	4,50	30,65	A-P1-23	102,03	4,34	442,81	A-P2-23	4,59	3,93	18,04
								A-P1-24	11,70	4,55	53,24	A-P2-24	1,93	3,93	7,58
								A-P1-25	5,14	4,57	23,49				
								A-P1-26	14,72	4,50	66,24				
								A-P1-27	0,95	4,50	4,28				
								A-P1-28	0,96	4,50	4,32				
								A-P1-29	6,55	2,03	13,30				
	128,41		380,61		553,97		2.265,94		604,85		8.489,92		603,58		2.538,94

FABBRICATO B

PIANO TERRA			
locale	superficie netta	altezza	volume netto
B-PT-01	14,00	5,76 *	80,57
		14,00	80,57

FABBRICATO C

PIANO TERRA				PIANO PRIMO			
locale	superficie netta	altezza	volume netto	locale	superficie netta	altezza	volume netto
vano scala	13,59	3,75 ^	50,96	vano scala	13,23	3,45 ^	45,64
C-PT-01	40,09	3,40	136,31	C-P1-01	13,58	3,41	46,31
				C-P1-02	5,73	3,41	19,54
				C-P1-03	21,15	3,41	72,12
		53,68	187,27			53,69	183,61

FABBRICATO D

PIANO INTERRATO				PIANO TERRA				PIANO PRIMO			
locale	superficie netta	altezza	volume netto	locale	superficie netta	altezza	volume netto	locale	superficie netta	altezza	volume netto
D-IN-01	16,78	2,55 °	42,79	D-PT-01	16,78	9,63 *	161,51	D-P1-01	13,75	4,02	55,28
D-IN-02	14,42	2,55 °		D-PT-02	14,42	9,63 *		D-P1-02	5,61	4,02	22,55
D-IN-03	12,09	2,55 °		D-PT-03	12,09	3,83					
D-IN-04	4,95	2,55 °		D-PT-04	4,95	3,83					
		48,24	42,79			48,24	161,51			19,36	77,83

TABELLE RIASSUNTIVE CALCOLO VOLUMI

Fabbricato	Piano	Sup lorda senza muri perimetrali	Altezza lorda	Volume lordo	Sup. lorda	Altezza lorda	Volume lordo	Totale superfici nette	Totale volumi netti	Superficie coperta	Superficie scoperta
A	P -1	166,95	4,50	751,28	214,68	4,50	966,06	128,41	380,61		
	PT	728,30	5,00	3.641,50	833,40	5,00	4.167,00	553,97	2.265,94		
	P1°	746,62	4,90	3.658,44	833,37	4,90	4.083,51	604,85	8.489,92		
	P2°	726,05	4,30	3.122,02	816,50	4,30	3.510,95	603,58	2.538,94		
	sottot.	719,25			811,92						
		3.087,17		11.173,23	3.509,87		12.727,52	1.890,81	13.675,41	833,40	
B	PT	14,00	5,76	80,64	18,35	5,76	105,70	14,00	80,57		
		14,00		80,64	18,35		105,70	14,00	80,57	18,35	
C	PT	55,78	3,75	209,18	70,87	3,75	265,76	53,68	187,27		
	P1°	57,07	3,45	196,89	71,45	3,45	246,50	53,69	183,61		
		112,85		406,07	142,32		512,27	107,37	370,88	70,87	
D	P -1	92,50	2,95	272,88	115,80	2,95	341,61	48,24	42,79		
	PT	53,21	3,90	207,52	66,88	3,90	260,83	48,24	161,51		
	P1°	53,50	4,04	216,14	66,88	4,04	270,20	19,36	77,83		
		199,21		696,53	249,56		872,64	115,84	282,12	66,88	
E	PT	141,90	3,81	540,64	175,55	3,81	668,85	225,82	787,81		
	P1°	146,40	4,18	611,95	172,90	4,18	722,72	171,54	641,35		
	P2°	147,30	3,10	456,63	175,60	3,10	544,36	134,18	134,18		
		435,60		1.609,22	524,05		1.935,93	531,54	1.563,34	175,55	
Totale		3.848,83		13.965,69	4.444,15		16.154,05	2.659,56	15.972,32	1.165,05	895,60